



# ACROW

Formwork Technology

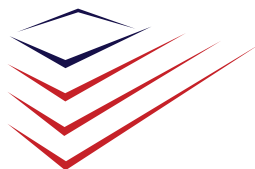


## Acrow Prop Table Form

Acrow MISR Provides Full Site Service Based On More Than 35 Years Experience In The Field



**ACROW**  
Formwork Technology









# Contents

Introduction	2
Advantage	3
Product Overview	4
Table Shifting Trolley	5
Acrow C-Fork (S.W.L 1000)	6
Application	7
Slab Table Design	8
Acrow European Prop Loads	10
Components	11



## Introduction

Being one of the largest formwork and scaffolding companies in Egypt, We are introducing the prop table form system. The prop table form system doesn't only enables the contractor to achieve the highest productivity rates, where the building geometry requires special table shapes, but it also proved to be one of the most cost effective and fast moving systems over time.

In addition, Acrow prop table form system is one of the fastest selling props all over the world. Through more than 30 years of production, Acrow prop system succeeded to fulfill all the client requirements. The prop consists mainly of two telescoping steel tubes that enable any adjustments to be made in order to suit the site conditions.

Finally, as a part of Acrow's drive towards improved technology, Acrow added a new prop generation Acrow European props (AEP), where they are extendable floor props made of 100% galvanized steel to ensure a long service life. They are designed to be used as vertical props for temporary structures.

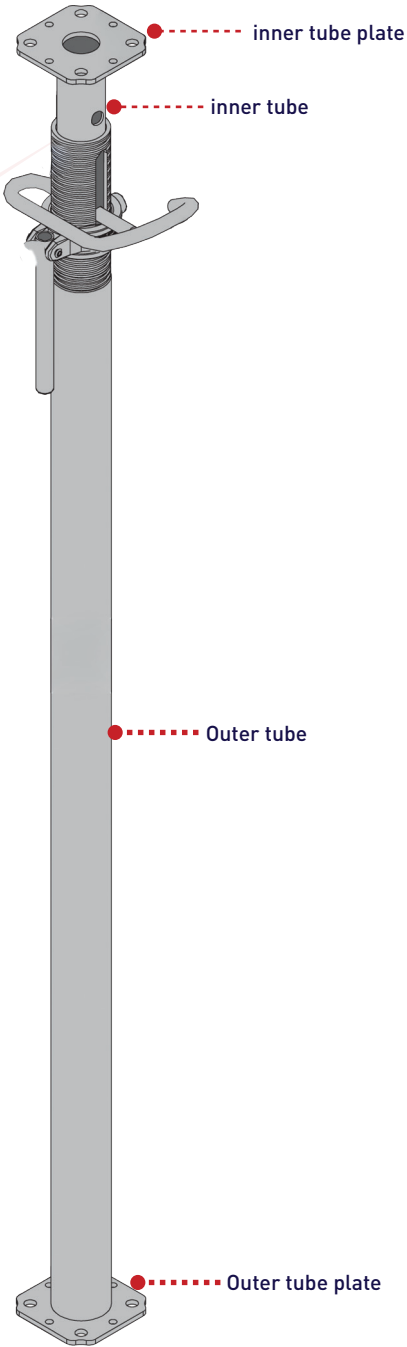


## Advantage

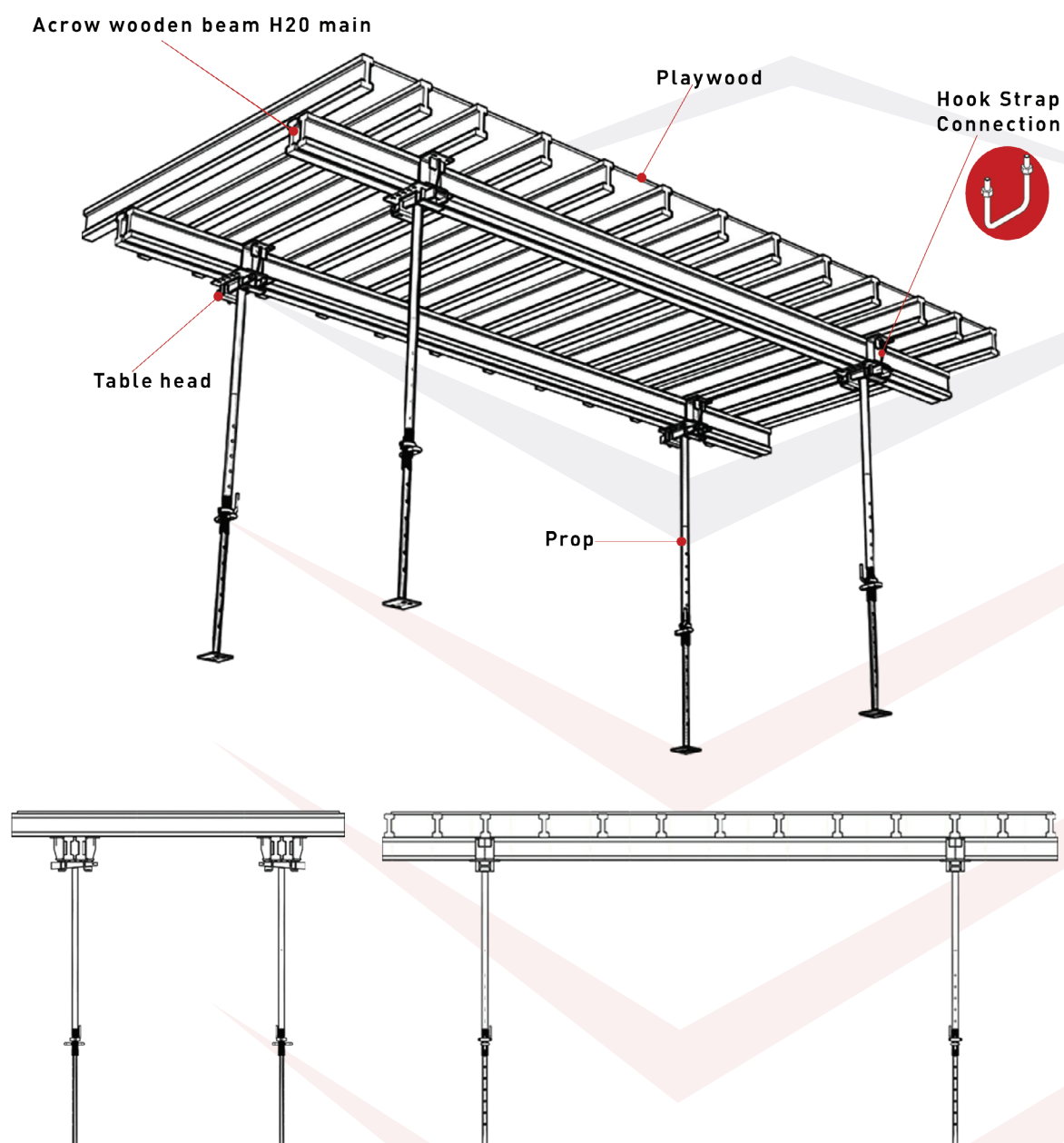
- Given sufficient crane capacity, slab tables are the most cost-effective solution where there is a high degree of repetition and open facades.
- Acrow prop tables are easy and practical to set up and can be shifted and adapted very quickly. This makes them a cost-effective and efficient way of carrying out large-area slab projects.

No. of parts/m2	Weight [kg/m2]	Area [m2] per prop	Time [h/m2]
0.05	50	5.00	0.10

1. Easy and practical to set up.
2. Quickly shifted and adapted.
3. Cost effective and efficient to be used in carrying out large-area slab projects.
4. Applicable for slab heights up to 5.00 m.
5. Cycle custom formats are applicable where needed.
6. Wedge-lock allows quick and easy work regarding attaching and detaching the props.
7. Low stacking height when transported and stored.
8. Safe, fast shifting appliances, saving time and money.
9. Seamless forming continuation into infill zones and closure gaps.
10. Higher speed due to the technically perfected individual components.
11. Easy to tailor to the construction schedule due to the available commissioning quantities – No problem with a weekly cycle.
12. Using the AEP (Acrow European Prop) gives high load capacity with low weight.
13. The AEP is 100% galvanized Prop having high durability.



## Product Overview



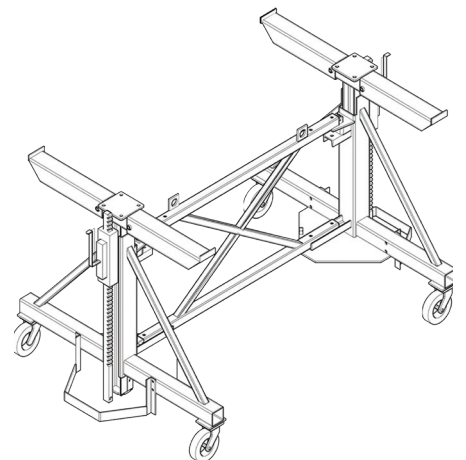


## Table Shifting Trolley

The prop table form can be horizontally moved by the means of a table shifting trolley. For safety considerations, the table shifting trolley has to be positioned at the table center to avoid

the table from moving. For dismantling, the two supporting arms are raised using the winch below the main H20 timber beam, which serves the main guide.

Once the prop table rests on the table shifting trolley, the prop can be released and the inner tube is inserted to easily move the table.





## Acrow C-Fork (S.W.L1000)

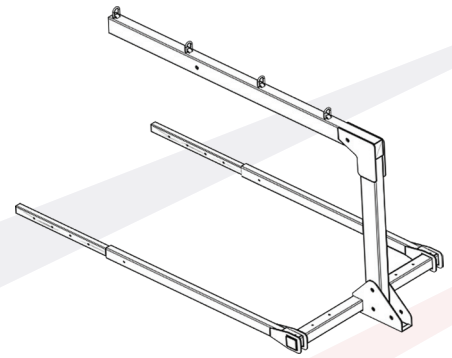
Acrow C-Fork allows the easy lifting and moving both horizontally and vertically of the prop table from one position to another. Moreover, Acrow C-Fork dimensions are carefully chosen to suit the table dimensions.

However, the prop can be either lifted from the short or long side.

Acrow C-Fork can be safely used for table size dimension up to 3.3 \* 6.0 m and a safe working load up to 1.0 ton weight. Finally, Acrow C-Fork is

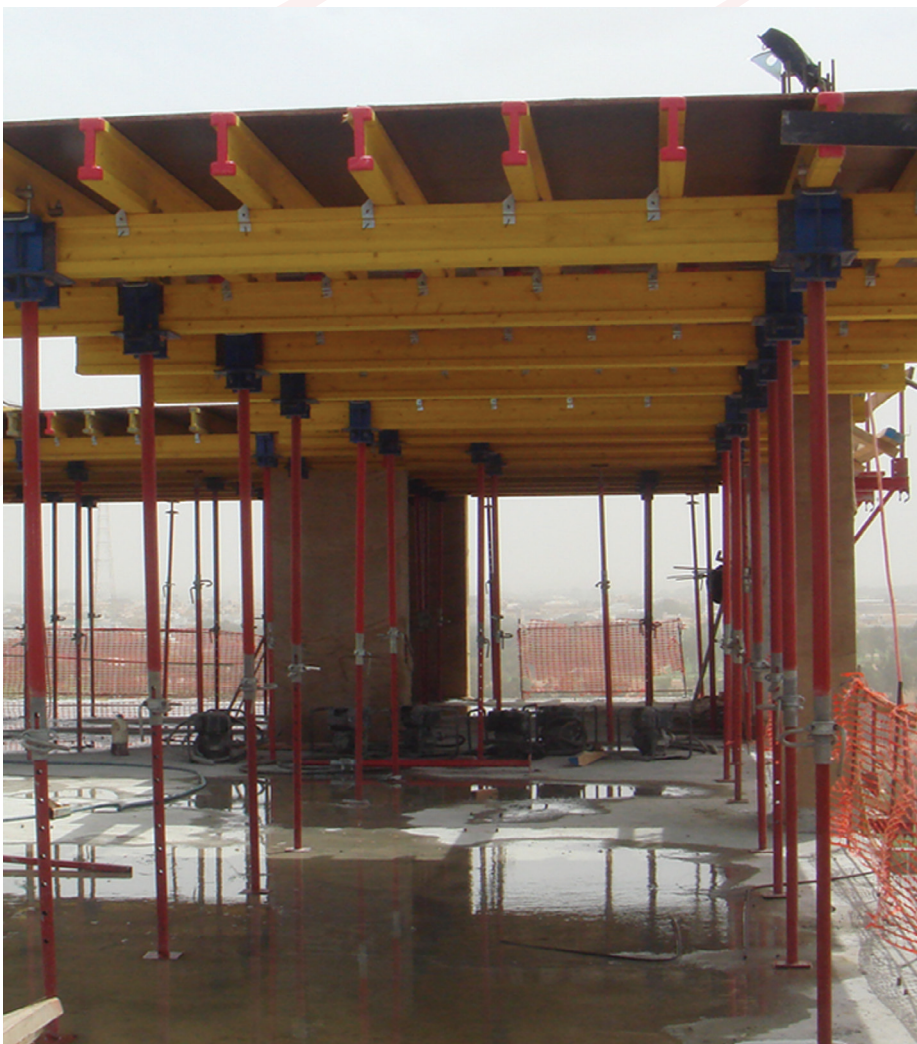
available in two sizes:

- One floor shutter with 3.00 m height.
- Double floor shutter with 6.00 m height.





## Applications



## Slab Table Design

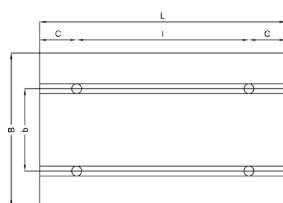
Slab Table with Main Girders 2 x H20

Slab Thickness 0.20 m; $q = 7.0 \text{ kN/m}^2$										
Table Length L [m]				2.50	3.00	3.50	4.00	4.50	5.00	6.00
Type 4 c[m]/I[m]				0.45/1.60	0.50/2.00	0.55/2.40	0.60/2.80	0.65/3.20		
Type 6 c[m]/I[m]							0.60/1.40	0.65/1.60		
Table Width B [m]	2.50	Main Girder Spacing b[m]	1.60	4/10.9	4/13.1	4/15.3	4/17.5	4/19.7	6/16.1	6/20.2
	3.00		2.00	4/13.1	4/15.8	4/18.4	4/21.0	6/16.8	6/19.3	6/24.3
	3.50		2.40	4/15.3	4/18.4	4/21.4	4/24.5	6/19.6	6/22.6	6/28.3
	4.00		2.80	4/17.5	4/21.0	4/24.5	6/19.1	6/22.5	6/25.8	6/32.4
	4.50		3.20	4/19.7	4/23.6	4/27.6	6/21.5	6/25.3	6/29.0	6/36.4
	5.00		3.60	4/21.9	4/26.3	4/30.6	6/23.9	6/28.1	6/32.2	6/40.5

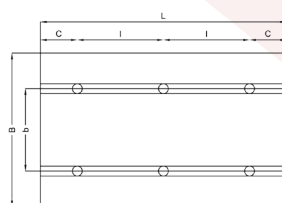
Slab Thickness 0.25 m; $q = 8.3 \text{ kN/m}^2$										
Table Length L [m]				2.50	3.00	3.50	4.00	4.50	5.00	6.00
Type 4 c[m]/I[m]				0.45/1.60	0.50/2.00	0.55/2.40	0.60/2.80			
Type 6 c[m]/I[m]							0.60/1.40	0.65/1.60	0.70/1.80	0.80/2.20
Type 8 c[m]/I[m]										0.70/1.53
Table Width B [m]	2.50	Main Girder Spacing b[m]	1.60	4/13.0	4/15.6	4/18.2	4/20.8	6/16.6	6/19.1	6/24.0
	3.00		2.00	4/15.6	4/18.7	4/21.8	4/24.9	6/20.0	6/22.9	6/28.8
	3.50		2.40	4/18.2	4/21.8	4/25.4	6/19.8	6/23.3	6/26.7	6/33.6
	4.00		2.80	4/20.8	4/24.9	4/29.1	6/22.6	6/26.6	6/30.6	6/38.4
	4.50		3.20	4/23.3	4/28.0	6/22.2	6/25.5	6/30.0	6/34.4	6/43.2
	5.00		3.60	4/25.9	4/31.1	6/24.7	6/28.3	6/33.3	6/38.2	8/31.2

Slab Thickness 0.30 m; $q = 9.7 \text{ kN/m}^2$										
Table Length L [m]				2.50	3.00	3.50	4.00	4.50	5.00	6.00
Type 4 c[m]/I[m]				0.45/1.60	0.50/2.00	0.55/2.40	0.60/2.80			
Type 6 c[m]/I[m]						0.55/1.20	0.60/1.40	0.65/1.60	0.70/1.80	0.80/2.20
Type 8 c[m]/I[m]									0.55/1.30	0.70/1.53
Table Width B [m]	2.50	Main Girder Spacing b[m]	1.60	4/15.1	4/18.1	4/21.1	4/24.2	6/19.4	6/22.2	6/27.9
	3.00		2.00	4/18.1	4/21.7	4/25.4	6/19.8	6/23.2	6/26.7	6/33.5
	3.50		2.40	4/21.1	4/25.4	4/29.6	6/23.1	6/27.1	6/31.1	6/39.1
	4.00		2.80	4/24.2	4/29.0	6/23.0	6/26.4	6/31.0	6/35.6	8/29.1
	4.50		3.20	4/27.2	4/32.6	6/25.9	6/29.7	6/34.9	6/40.0	8/32.7
	5.00		3.60	4/30.2	4/36.2	6/28.7	6/33.0	6/38.7	8/31.2	8/36.3

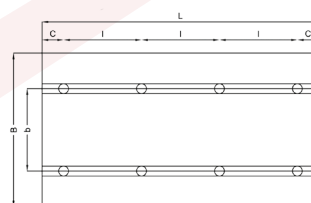
Type of Table and Prop Load [kN]



Type4



Type6



Type8



Slab Table Design

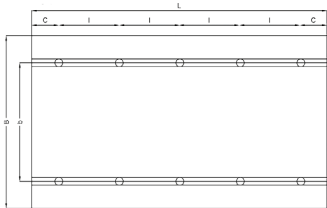
Slab Table with Main Girders 2 x H20

Slab Thickness 0.35 m; q = 11.2 kN/m <sup>2</sup>										
Table Length L [m]				2.50	3.00	3.50	4.00	4.50	5.00	6.00
Type 4 c[m]/I[m]				0.45/1.60	0.50/2.00	0.55/2.40				
Type 6 c[m]/I[m]				0.4/0.85	0.45/1.05	0.55/1.20	0.60/1.40	0.65/1.60	0.70/1.80	0.80/2.20
Type 8 c[m]/I[m]								0.50/1.17	0.55/1.30	0.70/1.53
Table Width B [m]	2.50	Main Girder Spacing b[m]	1.60	4/17.5	4/21.0	4/24.5	6/19.1	6/22.5	6/25.8	6/32.4
	3.00		2.00	4/21.0	4/25.2	4/29.5	6/23.0	6/27.0	6/31.0	6/38.9
	3.50		2.40	4/24.5	4/29.5	6/23.4	6/26.8	6/31.5	6/36.2	6/45.4
	4.00		2.80	4/28.1	6/23.1	6/26.7	6/30.6	6/36.0	6/41.3	8/33.8
	4.50		3.20	4/31.6	6/26.0	6/30.0	6/34.4	6/40.5	8/32.6	8/38.0
	5.00		3.60	6/24.1	6/28.8	6/33.4	6/38.3	8/32.4	8/36.2	8/42.2

Slab Thickness 0.40 m; q = 12.8 kN/m <sup>2</sup>										
Table Length L [m]				2.50	3.00	3.50	4.00	4.50	5.00	6.00
Type 4 c[m]/I[m]				0.45/1.60	0.50/2.00	0.55/2.40				
Type 6 c[m]/I[m]				0.4/0.85	0.45/1.05	0.55/1.20	0.60/1.40	0.65/1.60	0.70/1.80	0.80/2.20
Type 8 c[m]/I[m]							0.45/1.03	0.50/1.17	0.55/1.30	0.70/1.53
Type 10 c[m]/I[m]										0.55/1.23
Table Width B [m]	2.50	Main Girder Spacing b[m]	1.60	4/20.0	4/24.0	4/28.0	6/21.8	6/25.6	6/29.4	6/37.0
	3.00		2.00	4/24.0	4/28.8	6/22.8	6/26.2	6/30.7	6/35.3	8/28.8
	3.50		2.40	4/28.0	6/23.0	6/26.6	6/30.5	6/35.9	6/41.2	8/33.7
	4.00		2.80	4/32.0	6/26.3	6/30.4	6/34.9	6/41.0	8/33.0	8/38.5
	4.50		3.20	6/24.7	6/29.6	6/34.2	6/39.2	8/33.2	8/37.1	10/35.7
	5.00		3.60	6/27.5	6/32.9	6/38.0	8/32.6	8/36.9	8/41.2	10/39.7

Slab Thickness 0.50 m; q = 15.9 kN/m <sup>2</sup>										
Table Length L [m]				2.50	3.00	3.50	4.00	4.50	5.00	6.00
Type 4 c[m]/I[m]				0.45/1.60	0.50/2.00					
Type 6 c[m]/I[m]				0.4/0.85	0.45/1.05	0.55/1.20	0.60/1.40	0.65/1.60	0.70/1.80	0.80/2.20
Type 8 c[m]/I[m]						0.40/0.90	0.45/1.03	0.50/1.17	0.55/1.30	0.70/1.53
Type 10 c[m]/I[m]								0.40/0.93	0.45/1.03	0.55/1.23
Table Width B [m]	2.50	Main Girder Spacing b[m]	1.60	4/24.8	4/29.8	6/23.7	6/27.1	6/31.9	6/36.6	8/29.9
	3.00		2.00	4/29.8	4/35.8	6/28.4	6/32.5	6/38.3	6/43.9	8/35.9
	3.50		2.40	6/23.9	6/28.6	6/33.1	8/38.0	8/32.1	8/35.9	10/34.6
	4.00		2.80	6/27.3	6/32.7	6/37.8	8/43.4	8/36.7	8/41.0	10/39.5
	4.50		3.20	6/30.8	6/36.8	8/31.6	8/36.4	8/41.3	10/37.1	
	5.00		3.60	6/34.2	6/40.9	8/35.1	8/40.5	10/37.1	10/41.2	

Type10



Two Main Girder HT20  
Perm. M = 2 x 5 kN.m  
Perm. Q = 2 x 11 kN  
Perm. A = 2 x 22 kN

Load according to DIN 4421  
Shoring System Class III

Dead Load      g = 0.30 kN/m<sup>2</sup>  
Concrete Load    b = 26 kN/m<sup>2</sup> x d(m)  
Live Load        p = 0.20 x b kN/m<sup>2</sup>  
                         1.5 ≤ p ≤ 5.0 kN/m<sup>2</sup>

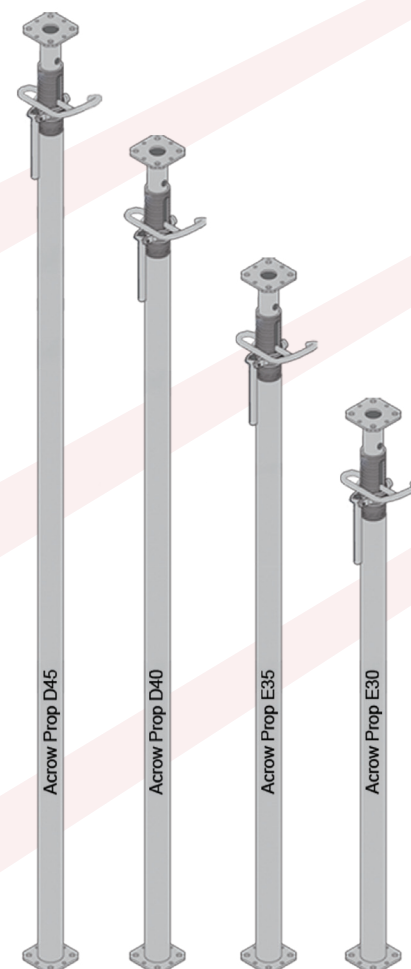
Total Load      q= g + b + p

## Acrow European Prop Loads

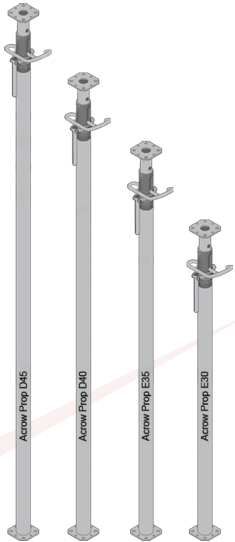
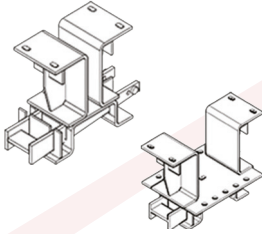
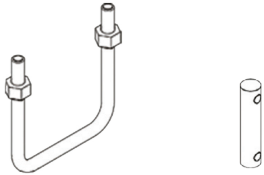
- The AEP prop is designed to act as a supporting element for both Acrow horizontal formwork and all other conventional shoring applications following all safety rules and regulations.
- It is impossible for the inner and outer tube to become involuntarily disengaged to ensure a safety closure system.
- For providing a non-hand catching protection system, there is a 10 cm distance between the inner upper plate tube and the outer one when the post shore is completely retracted.
- The flexural rigid link with the table form superstructure dramatically increases the floor props load bearing capacity by 10 KN, such that:
- The permitted capacity of Acrow prop E30300/ and E30350/ becomes: 30 KN
- The permitted capacity of Acrow prop D20400/ and D20450/ becomes: 40 KN

Extension ( cm )	G 300 reg. DIN	E 30/300	G 350 reg. DIN	E 30/350	G 410 reg. DIN	D 20/400 nach EN	G 490 reg. DIN	D 20/450 nach EN
150								
160								
180	35.0	30 kN						
200	35.0		35.0	30 kN				
220	35.0		35.0		35.0	20 kN		
240	31.3		35.0		35.0			
250	28.8		33.6		35.0		35.0	20 kN
260	26.6		31.1		35.0		35.0	
280	23.0		26.8		31.4		35.0	
300	20.0		23.3		27.3		30.5	
320			20.5		24.0		28.7	
340			18.2		21.3		25.4	
350			17.1		20.1		24.3	
360					19.0		22.7	
380					17.0		20.4	
400					15.4		18.4	
420							16.7	
450							14.5	
460								
480								
named reg. EN 1065	C30	E30	C35	E35	C40	D40	C45	D45

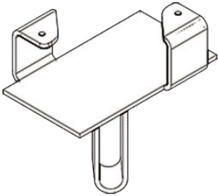
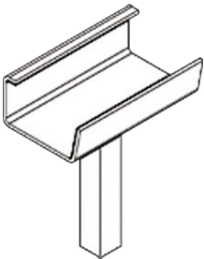
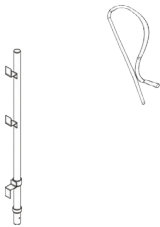
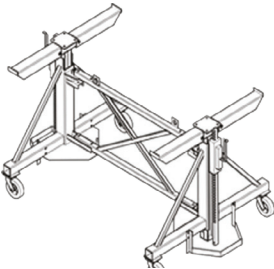
Product name	Min. Extension mm	Max. Extension mm	Max. Load KN
Acrow Prop E30	1740	3000	30 KN
Acrow Prop E35	1990	3500	30 KN
Acrow Prop D40	2240	4000	20 KN
Acrow Prop D45	2510	4500	20 KN



Components

Item	Description	Code no.	Weight (kg)
	<div> <div>Acrow Prop E30</div> <div>Acrow Prop E35</div> <div>Acrow Prop D40</div> <div>Acrow Prop D45</div> </div>	<div> <div>6221177013381</div> <div>6221177013392</div> <div>6221177013403</div> <div>6221177049744</div> </div>	<div> <div>16.90</div> <div>20.50</div> <div>22.00</div> <div>25.40</div> </div>
	<div> <div>Prop table head (single)</div> <div>Prop table head (double)</div> </div>	<div> <div>6221177013844</div> <div>6221177013837</div> </div>	<div> <div>16.50</div> <div>18.50</div> </div>
	<div> <div>Connection unit</div> <div>(for prop table head)</div> </div>	<div> <div>6221177028046</div> </div>	<div> <div>1.00</div> </div>

# Components

Item	Description	Code no.	Weight (kg)
	Claw head (single)	6221177013752	1.10
	Claw head (double)	6221177013769	1.30
	Prop hanger (single)	6221177013578	1.20
	Prop hanger (double)	6221177013585	1.60
	Spring Clip for handrail	6221177010102	0.01
	Handrail l=1.20 cm	6221177010034	4.50
	Shifting Trolley	6221177024413	545.00



Components

Item	Description	Code no.	Weight (kg)
	Timber H20 L =2.50 m	6221177024062	11.25
	Timber H20 L =2.90 m	6221177024076	13.05
	Timber H20 L =3.30 m	6221177024093	14.85
	Timber H20 L =3.60 m	6221177024109	16.20
	Timber H20 L =3.90 m	6221177024116	17.55
	Timber H20 L =4.50 m	6221177024130	20.22
	Timber H20 L =4.90 m	6221177024147	22.05
	Timber H20 L =5.90 m	6221177024154	26.55
	Prop leg	6221177013776	12.00
	C Fork 3.00 m	6221177003876	905.00
	C Fork 6.00 m	6221177003883	1450.00

# ACROW

Formwork Technology



Acrow H20 & solidor



Acrow One shutter solidor



Acrow V.M.C



Acrow Tech-Form



Acrow Cuplock



Acrow Bridge table form



Acrow Circular column



Acrow climbing system



Acrow shorbrace Table form



Acrow Big steel panel



Acrow European prop



Acrow Vari form



Acrow Prop table form



Acrow frame



Acrow early striking system



Acrow Ring lock

[www.acrow.co](http://www.acrow.co)



# 20 OFFICE

## AFRICA

### EGYPT

#### Head Quarter

Factory: Wady Houf, Helwan

**Tel.:** [+202] 23690 616 / 23690 739

[+202] 23695 700 / 23699 976

**Fax:** [+202] 23695 260

**E-mail:** info@acrow.co

#### Alexandria Branch

27 Dr. mahmoud Daoud st.

**Tel.:** [+203] 4200 289

**E-mail:** acrowalex@acrow.co

### MOROCCO

221 BVD Zerkouni , 3ème et 4ème

etage - B.N. 06/08, Casablanca

20100, Morocco

**Tel. :** [+212] 522 945 912

**Mob. :** [+212] 660 675 640

**E-mail:** acrowmorocco@acrow.co

### ALGERIA

Siege Social, cité des travailleurs lot. 09

groupe 02 Dar El beida, Algiers

**Tel.:** +213 (0) 23 74 74 37

**Tel.:** +213 (0) 23 74 74 35

**Fax:** +213 (0) 23 74 74 37

**E-mail:** acrow-dz@acrow.co

### NIGERIA

Block D, Plot 23, Water Corporation  
drive, VI, Lagos.

**Tel. :** [+234] 818 0000 295

**Mob. :** [+234] 6061 7290 99

**Email :** acrownigeria@acrow.co

### KENYA

#### Nairobi

Kiungani Rd, off Mombasa Rd,

Nairobi, Kenya

**Tel. :** [+254] 772324535

**E-mail:** acrowkenya@acrow.co

### TANZANIA

#### Dar EsSalam

Oyster Bay Masaki, Dar EsSalam

**Tel. :** [+255] 768 696 314

**E-mail:** acrowtanzania@acrow.co

# 14 BRANCH

## ASIA

### KSA

#### Riyadh Office

Office No. 13A- Sultan Business Building

- Almaathar Ash shamali district - Sultan

Ben Abdulaziz Street - Riyadh

**Tel. :** [+966] 11 216 0504

**Fax :** [+966] 11 216 0503

**Mob. :** [+966] 55 001 2693

**E-mail:** acrowriyadh@acrow.co

#### Jeddah Office

Office No. 15 - 4th Floor - Zahid

Building - Alsalamah district - Mohamed

Ibrahim Masoud Street - Jeddah

**Tel. :** [+966] 12 691 7941

**Fax :** [+966] 12 275 1037

**Mob. :** [+966] 50 001 3206

**E-mail:** acrowjeddah@acrow.co

#### Dammam Office

Office 2, Alsalam Building, Madinat

Alummal Dist., King Fahd Road

**Tel. :** [+966] 13 805 4151

**Fax :** [+966] 11 216 0503

**Mob. :** [+966] 55 468 7057

**E-mail:** dammam@acrow.co

#### Madinah Al Munawwarah

Office 6, First Floor, Ghos Building, In

Front Of Saudi Post, Sultanah Street,

Almadinah

**Tel. :** [+966] 11 216 0504

**Fax :** [+966] 11 216 0503

**Mob. :** [+966] 55 775 8197

**E-mail:** almadinah@acrow.co

#### Tabuk City

Al Muruj District

Prince Mamdouh Bin Abdul Aziz Street

Building Name : Tabuk Business Center

Building No.2786

PO.Box : 47312

Second Floor , Office No.203

**Tel. :** [+966] 11 216 0504

**Fax :** [+966] 11 216 0503

**Mob. :** [+966] 55 001 2693

**E-mail:** acrowriyadh@acrow.co

### UAE

#### Dubai

Office 1002, The Onyx Tower 2- The  
greens - Dubai.

**Tel. :** [+971] 43439498

**Fax :** [+971] 43439598

**Mob. :** [+971] 528228811

**E-mail:** acrowgulf@acrow.co

#### Abu Dhabi

Office 816, Al Junaibi Tower, Al Muroor  
Road - Abu Dhabi.

**Mob. :** [+971] 588113383

**E-mail:** acrowad@acrow.co



## EUROPE

### ROMANIA

#### Acrow SRL

Strada Intrarea Panduri 4, Rudeni 077046,  
Romania

**Mob. :** [+40] 721 297 342

**E-mail:** acrow.romania@acrow.co

### KUWAIT

Al Aridiyah , Block 2 , Building 92,  
Kuwait Khalid Ali Al Kharafi &  
Bros.Co.W.LL

**Tel.:** [+965] 22083000 – Ext [240]

**Fax:** [+965] 22083001

**E-mail:** acrowkuwait@acrow.co

### BAHRAIN

#### Acrow Bahrain Co. W.L.L

Office 1718, building 1260, Road 2421  
Block 324 , Juffair, Manama , Kingdom of Bahrain

**Mob. :** [+973] 35 176 860

**E-mail:** acrowbahrain@acrow.co

### QATAR

#### Acrow Qatar

Salwa Road, Red Tag building,  
1st floor, Doha  
P.O. Box No.: 15104

**Tel.:** [+974] 44582357

**Fax:** [+974] 44582376

**E-mail:** acrowqatar@acrow.co

### OMAN

#### Acrow LLC

Office 23, Bin Hayl 2 Building , Bawshar  
St ,Muscat , Sultanate of Oman

**Tel. :** [+968] 24 112 791

**Mob. :** [+968] 92 543 734

**E-mail:** acrowmuscat@acrow.co

### JORDAN

Jordan - Amman - Al Jandawil - Hosni  
Subar Str - Building no 05 - Third Floor

**Mob. :** [+962] 797 603 936

**E-mail:** acrow.jordan@acrow.co